



FLOOD



SPOT

COMPACT DESIGN
 24VDC MACHINE POWER
 SMART ASSIST CONTROLS
 SIMPLIFY SETUP & OPERATION

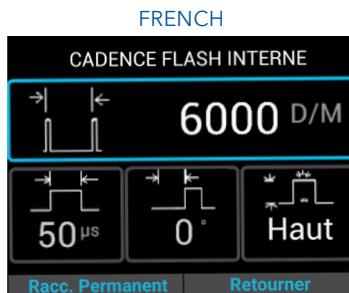
FIRST LED INSPECTION STROBE SPECIFICALLY DESIGNED TO MEET OEMS WORLDWIDE NEEDS

Unilux has designed the first LED strobe to integrate seamlessly into OEM machines. The LED27 is the perfect combination of form and function; exceptionally bright coverage in a compact strobe that's easy to use. The LED27 takes up very little space and runs off existing 24VDC machine power, eliminating the need for a separate power supply. Smart Assist graphic controls make it easy for any user to set up and operate with all controls and on-screen instructions in their language!

FEATURES

- High-output LEDs deliver coverage up to a 600 mm width with even illumination
- Compact design takes up little machine space
- Runs on 24VDC machine power, eliminating the need for a separate 110/220V AC supply
- On-screen help and instructions are provided for every setting
- Available in multiple languages to accommodate global operations
- Simple dashboard screen shows all critical settings at a single glance
- Adjustable Duration and Intensity to adapt to any application

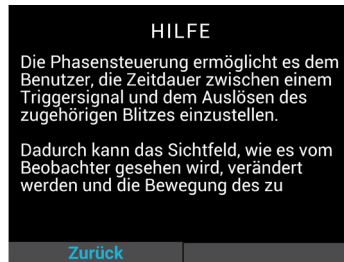
SMARTASSIST AVAILABLE IN MULTIPLE LANGUAGES*



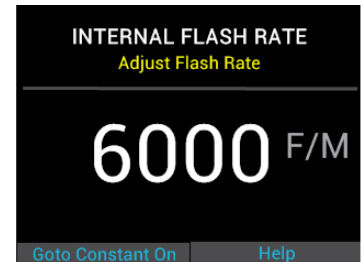
Dashboard Screen



Intensity Screen



Help Screen



Flash Rate Screen

* For the most recent list of available languages get in touch with your [local sales representative](#).

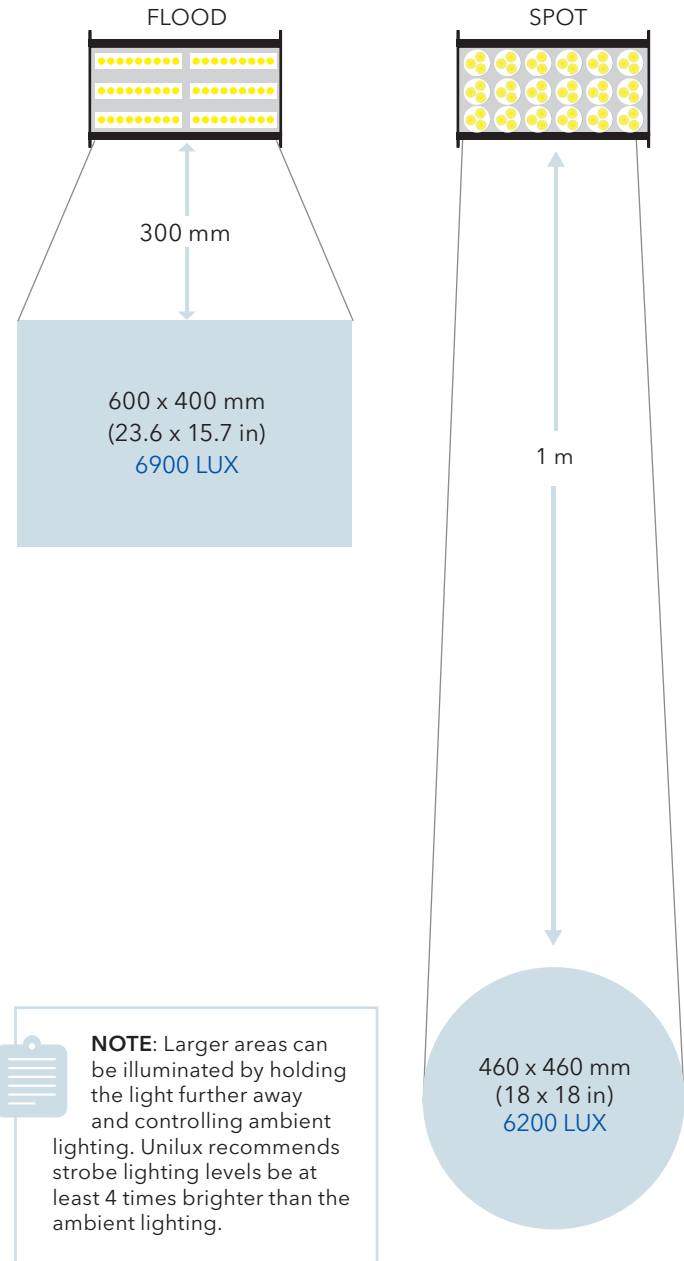


SPECIFICATIONS

LED27_{FM}

Model Numbers	
LED27FM Flood	03-1251-F
LED27FM Spot	03-1251-S
Color Rendering Index	CRI 75
Color Temperature	6,500 Kelvin
Power Requirement	
	36W (24VDC @ 1.5A max)
Physical Dimensions	
	L x W x H
Size	126 x 153 x 106 mm (4.9 x 6 x 4.8 in)
	Weight
	1.3 kg (2.9 lb)
FLOOD OUTPUT & COVERAGE	
Distance to target	LUX OUTPUT @ 6,000 F/M & 100µs
@ 300 mm (12 in)*	6900 LUX
@ 600 mm (2 ft)*	1900 LUX
Peak Output	7600 LUX
Distance to target	Coverage (W x H)
@ 300 mm (12 in)*	600 x 400 mm (23.6 x 15.7 in)
@ 600 mm (2 ft)*	750 x 520 mm (29.5 x 20.5 in)
SPOT OUTPUT & COVERAGE	
Distance to target	LUX OUTPUT @ 6,000 F/M & 100µs
@ 300 mm (12 in)*	11600 LUX
@ 600 mm (2 ft)*	8250 LUX
@ 1 m (3.3 ft)*	6200 LUX
Peak Output	12800 LUX
Distance to target	Coverage (W x H)
@ 300 mm (12 in)*	340 x 315 mm (13.4 x 12.4 in)
@ 600 mm (2 ft)*	390 x 370 mm (15.3 x 14.5 in)
@ 1 m (3.3 ft)*	460 x 460 mm (18 x 18 in)
External Trigger Source	
Source	0 - 1666.65 Hz
Pulse TTL	4.5V - 40V @ 10mA 500µs min pulse width
Open Collector	4.5V - 40V @ 10mA 500µs min pulse width
Contact Closure	15V and Ground Supplied 500µs min pulse width
Flash Duration	
	2µs to 1% of the flash period capped at 100µs
Environmental	
Operating Temperature	32°F to 104°F / 0°C to 40°C
Humidity	0-95% non-condensing

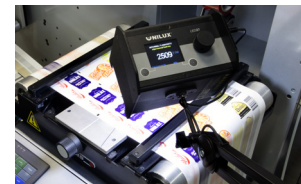
LIGHT OUTPUT & COVERAGE*



EASY TO MOUNT ON ANY MACHINE



TWO MOUNTING OPTIONS FROM TOP OR BOTTOM



MULTIPLE MOUNTING OPTIONS AVAILABLE

For further information visit our website at www.unilux.com. ©Unilux, Inc. 2024. All rights reserved. Specifications subject to change without notice.